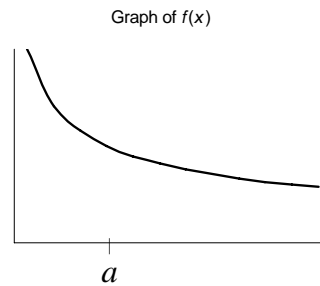
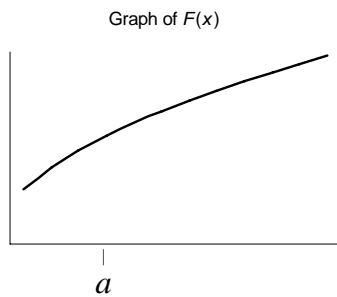
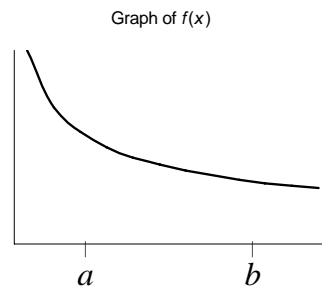
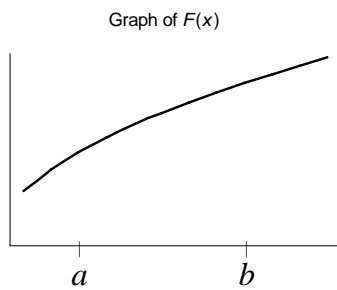


Assume $F'(x) = f(x)$ and the Fundamental Theorem of Calculus applies in each case. Give an illustration for each quantity on the indicated graph.

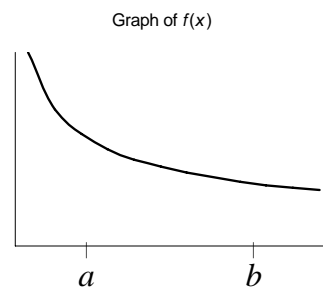
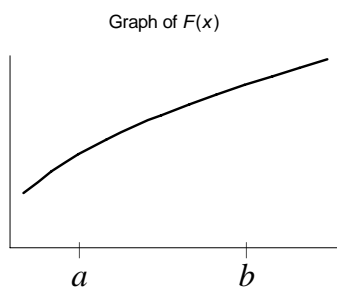
1. $f(a)$



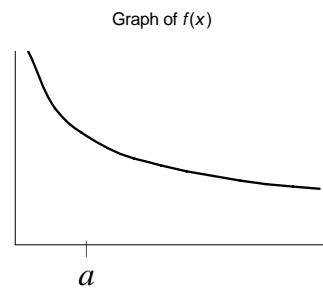
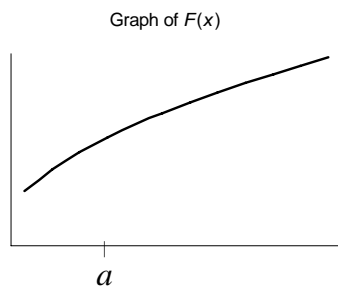
2. $\int_a^b f(x)dx$



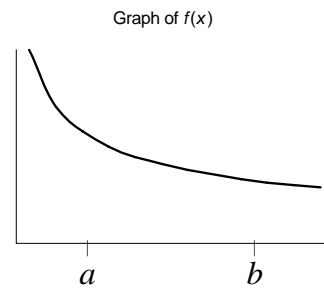
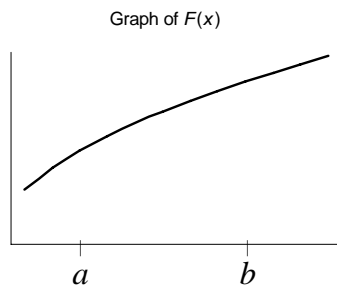
3. $\frac{\int_a^b f(x)dx}{b-a}$



4. $F'(a)$



5. $F(b) - F(a)$



6. $\frac{F(b) - F(a)}{b - a}$

