

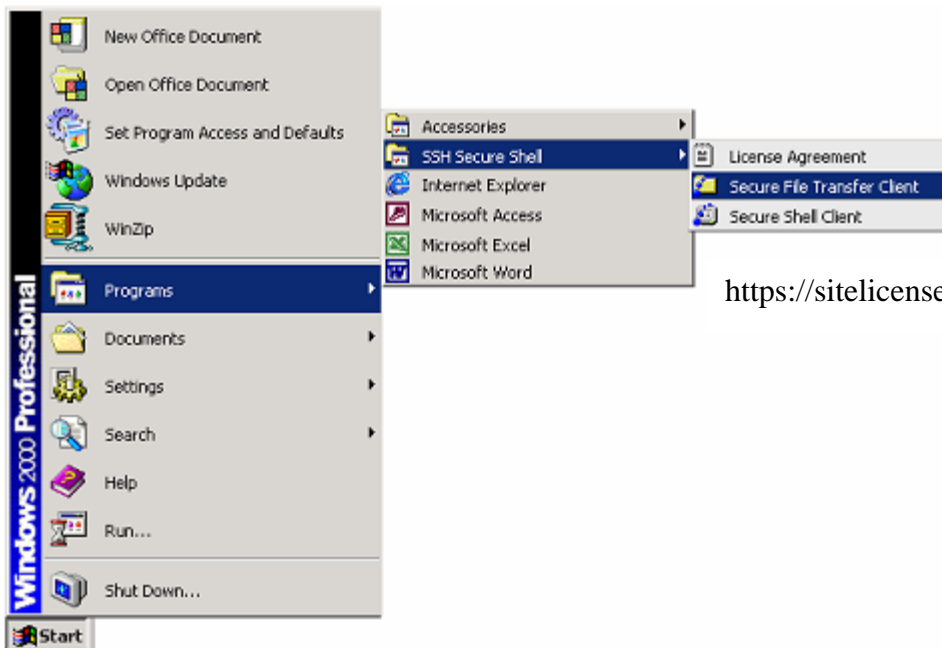
Transferring Files To and From Your Linux Account

using SSH Secure Shell File Transfer Client

SSH SECURE SHELL

The program that we will use to move our files from your Windows computer to the Linux account is called SSH Secure Shell File Transfer Client. It should already be installed on your computer and available in the Start Menu → Programs → SSH Secure Shell → Secure File Transfer Client. If the program is not installed

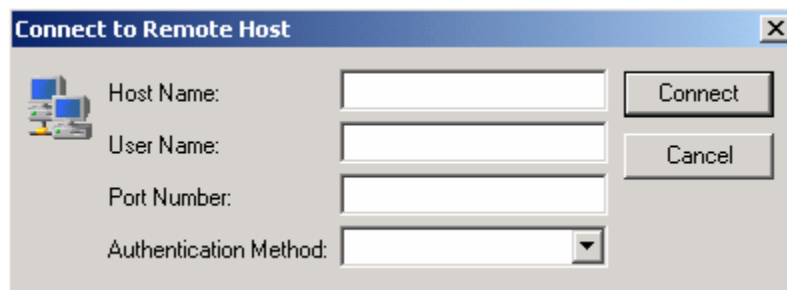
on your computer, it can be downloaded for free from the U of A Software Site License Web Site (the address is listed below).



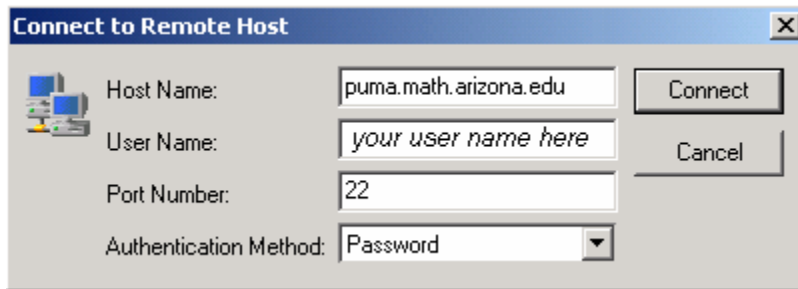
<https://sitelicense.arizona.edu/ssh/sshform.htm>

CONFIGURING SSH SECURE SHELL

In order to connect to the server, a few settings must be configured. NOTE: THESE SETTINGS ARE SPECIFIC FOR THE MATH DEPARTMENT. After opening SSH Secure Shell, click on the button that says Quick Connect, located on the upper left corner of the window. After clicking this button, a window will pop up that will look like the following:



In this form, enter the following information:



Connect to Remote Host

Host Name: puma.math.arizona.edu

User Name: your user name here

Port Number: 22

Authentication Method: Password

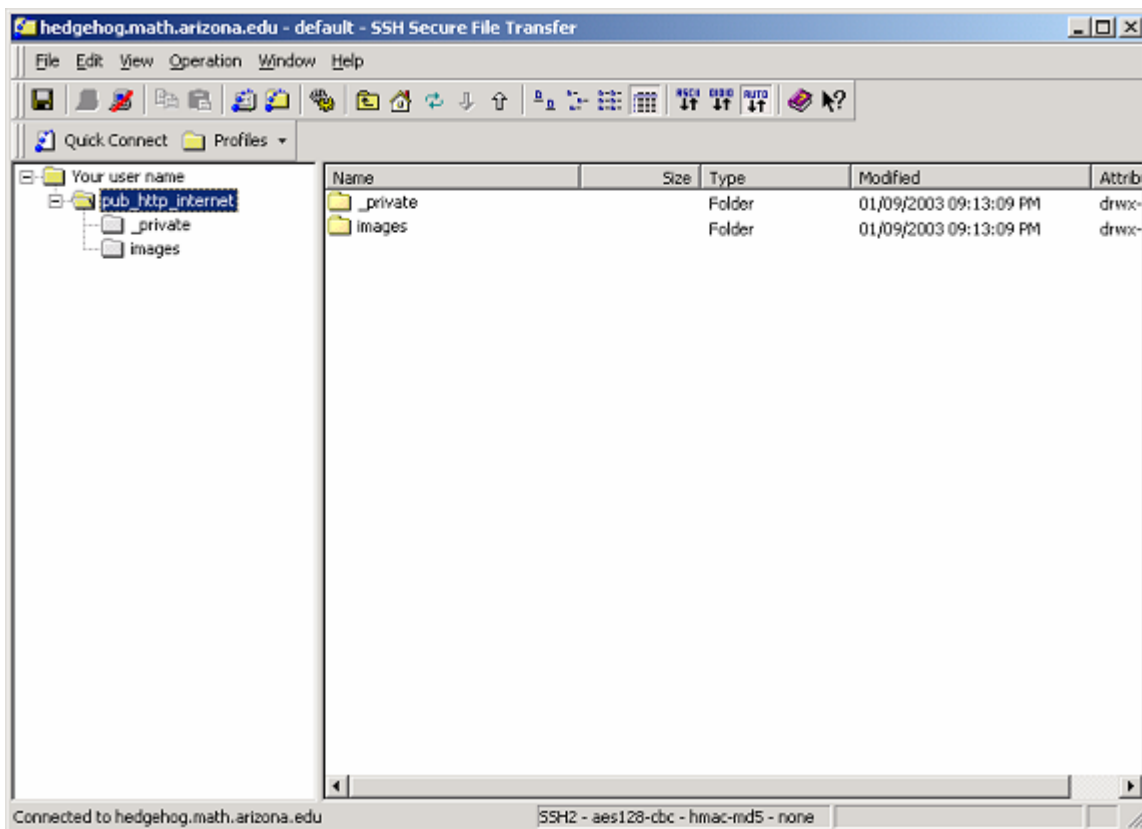
Connect

Cancel

For the text box Host Name, enter:	puma.math.arizona.edu
For the text box User Name, enter:	<i>your user name</i> (this is the same as the first part of your email address, i.e., if your email is john@math.arizona.edu, your user name is <i>john</i>).
For the text box Port Number, enter:	22
For the text box Authentication Method, enter:	Password

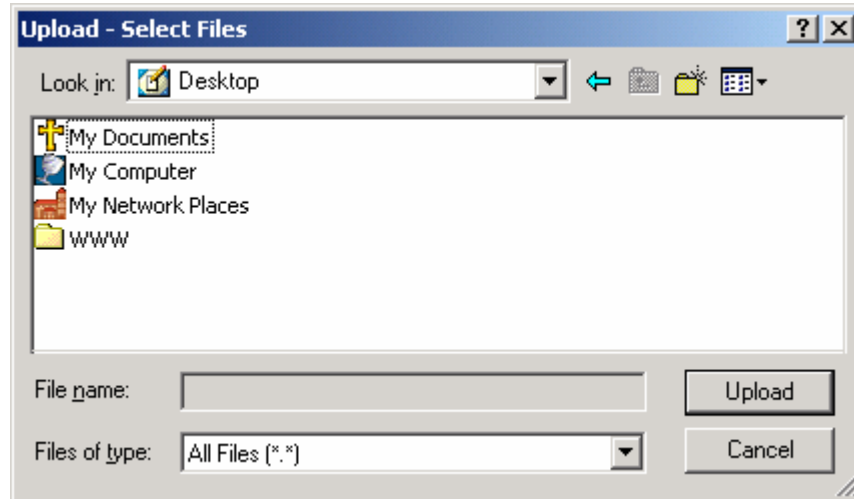
After entering this information, click on the “**Connect**” button. A window will pop up asking for your password. Enter the same password that you use for your email, and then click “**OK**”. Once you have done this, you will connect to the server.

The window should look something like the following:

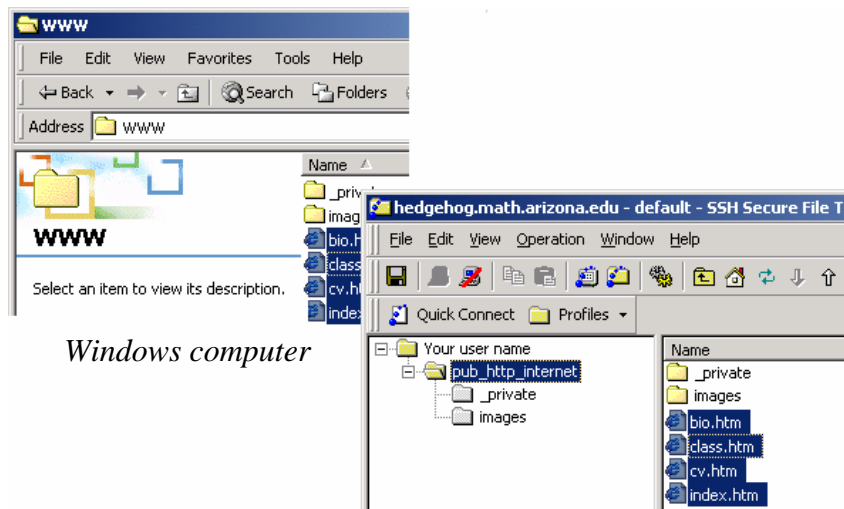


TRANSFERRING FILES TO AND FROM YOUR LINUX ACCOUNT

At this point in the tutorial, we are connected to your Linux account. For transferring files, there are two commands that we'll want to be able to do. The first is uploading a file from your Windows computer to your Linux account. To upload a file, start by pressing CTRL and U at the same time. This will open the following window:



Browse through your computer to find the files that you want to copy to your Linux account. Once you've selected the file or files, click **“Upload”**. The files you selected are now on the server, as well as on your computer.



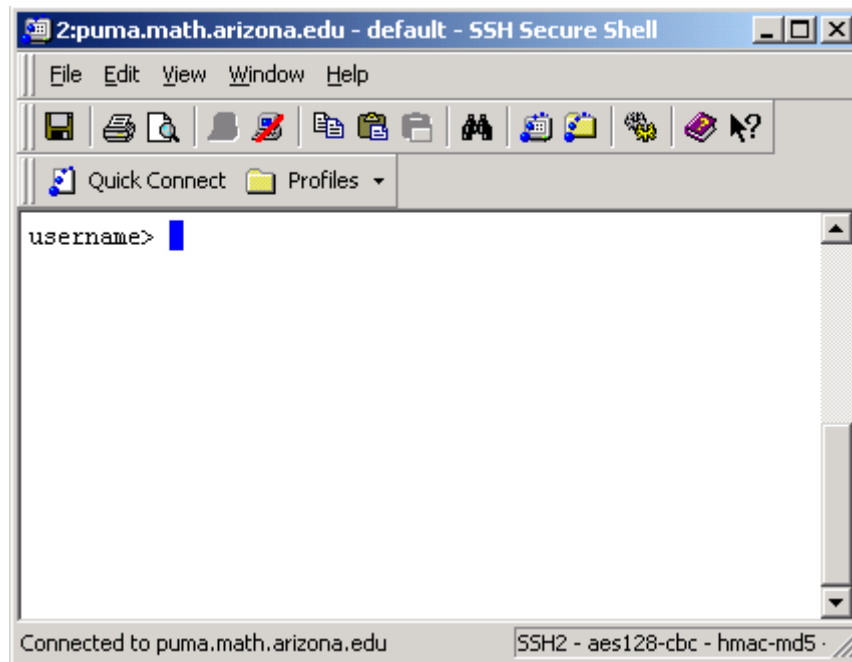
Windows computer

Linux account

To download a file from your Linux account to your Windows computer, start by selecting the file that you want to move. Click once on the file you want to transfer. After clicking on it once, press CTRL and U at the same time. This will open a window similar to the one that opened when we uploaded a file. Select where you'd like to save the file on your Windows computer. When you're done, click **“Download”**.

USING LINUX COMMANDS THROUGH SSH

While using SSH Secure Shell, it is still possible to use Linux commands to move, modify, and delete your files. The way to do this is by opening up a new terminal. Start by going to the Window menu at the top of the SSH screen. Under the Window menu, there is an option for “New Terminal”. This will open up the following window:



From this point, you can use most of your basic Linux command to manipulate files, run various programs, and arrange your files.